



**NIKA**  
HAIR BEAUTY EXCELLENCE

**GRACE**  
with MPP Technology

**SURPRISE WITH BRILLIANCE**





**NIKA**  
HAIR BEAUTY EXCELLENCE

**GRACE**  
with MPP Technology

**SURPRISE WITH BRILLIANCE**

For a woman, nothing is more important than her hair. Nika Hair Beauty Excellence is well aware of this and so has drawn on intense laboratory research to create GRACE, an innovative and professional permanent colouring system, **totally AMMONIA, PPD and RESORCINOL-FREE** for complete hair care and perfect colour results so that hairdressers can fulfil every woman's dream of beautiful hair.

Rich in NATURAL INGREDIENTS like Avocado Oil, Blueberry Extract and Pecan Nut Protein, GRACE guarantees excellent performance with exceptional conditioning qualities, giving hair extreme shine for an amazing healthy look.

With excellent lifting capacity, it creates brilliant and amazing highlights, fun light effects and, above all, wonderful coverage of grey hair. Thanks to the innovative **MPP TECHNOLOGY**, GRACE guarantees perfect results, and splendid energy and feminine charm for hair.

\* For top results, Grace should be used together with Nika Activator (5/10/20/30/40 vol)

ENRICHED WITH

AVOCADO OIL  
BLUEBERRY EXTRACT  
PECAN NUT PROTEIN

# WHY CHOOSE GRACE?

AMMONIA-FREE. EXCELLENT COVERAGE OF GREY HAIR. EASY AND QUICK TO APPLY, WITH UNIQUE COLOUR RESULTS.

If you want **long-lasting, brilliant colour** which amazes from every perspective, **natural highlights** and **strong coverage** of dark and white hair, then **GRACE** is what you need.

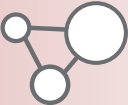
The advanced **Micro Pure Pigments (MPP)** technology, the result of Nika Hair Beauty Excellence research, begins with **optimal purity pigments (99.5%)** which undergo molecular reduction to achieve ultra-pure micro-pigments that easily penetrate the hair fibre to produce the best results.



## AMMONIA FREE

Grace **is totally and pleasantly ammonia-free, for perfect hair and scalp care.** The particular formula of Grace also reduces treatment time. Quicker application means reduced salon working time, for the benefit of both hairdresser and customers.

**GRACE IS COMPLETELY RESORCINOL AND PPD-FREE.**



## MPP TECHNOLOGY

Easier and deeper penetration of the hair's keratin structure, protecting the cuticle that forms the outer sheath - this is what Grace's **micro-pigments** offer. They allow hair to maintain its light and transparency, reflecting from the inside, penetrating light and dark colours in all conditions for a long-lasting colour that always gleams.



## INGREDIENTS

Beautiful shiny and healthy hair, with added scalp protection. These are the benefits that **Avocado Oil, Blueberry Extract** and **Pecan Nut Protein** bring hair treated with Grace.

# EXTRAORDINARY INGREDIENTS FOR EXCEPTIONAL COLOUR

INNOVATIVE AND RELIABLE FORMULA TO GIVE HAIR THE SWEETEST SOFTNESS EVER

## AVOCADO OIL

**BENEFITS**  
Avocado Oil has a strengthening and regenerative action for hair fibre.

**PROPERTIES**  
Avocado has high nutritional properties, rich in beta-carotene and glutathione, as well as a higher concentration of potassium than bananas.

## BLUEBERRY EXTRACT

**BENEFITS**  
Antioxidants, moisturisers, emollients, and conditioners all protect hair sheen.

**PROPERTIES**  
Contains significant quantities of organic acids, anthocyanins, vitamins A and C, and to a lesser extent vitamin B.

## PECAN NUT PROTEIN

**BENEFITS**  
The protein extracts of pecan nuts are moisturizing, nutritious, strengthening and restructuring.

**PROPERTIES**  
Pecan nuts are an exceptional source of monounsaturated fatty acids and excellent antioxidants.







# 52 NUANCES FOR ALL COLOUR SERVICES

Every woman has her own favourite colour and **GRACE**, with its huge range of hues, **is perfect for easy and personalized achievement of every customer's colour desire.**

Golden or beige, ash or pearl, browns like the new Special Brown or reds, coppers and violet - with the Superlifters and GRACE, **no colour desire remains unfulfilled.**

## COLOUR SERVICES

1

### PERMANENT COLOUR

This is the **most classic colour service**, and the most popular in every salon. With Grace, all salon customers are guaranteed strong impact colour results, even and permanent, with excellent grey hair coverage.

2

### TONING

Grace hair colours are perfect for giving the **exact tone required** to coloured or lightened hair, especially on streaks, highlights or hair lightened with other techniques.

3

### PRE-PIGMENTATION AND REPIGMENTATION

Two highly technical services that GRACE helps achieve totally safely.

**Pre-pigmentation** prepares the hair for increased absorption of the colour pigment, guaranteeing even colour on all hair types.

Grace **re-pigmentation** allows excellent colour results even on hair which has suffered from previous over-bleaching, lightening or perming/straightening.

4

### HIGH-LIFT LIGHTENERS


The Grace line includes also three shades of **High-Lif Lighteners**. Each of these can be used with the Activator at 30 or 40 vol, according to the effect required.



# HAIRCOLOR SERVICES GUIDE


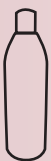
## 1. PERMANENT HAIRCOLOR

The most classic and popular haircolor salon service. When achieved with new Grace, intense color results are guaranteed, uniform and long-lasting. Excellent coverage of white hair. Grace should always be applied to dry, unwashed hair.

RATIO	ACTIVATOR	RESULT	PROCESSING TIME
 <b>1:1,5</b> 	20 vol (6%)	Bright and intense color	 40/45 min
	30 vol (9%) Activator 30 vol -> do not use on white hair		




## 2. TONING

The Grace range is perfect for creating the desired shade of color on bleached or lightened hair, especially with streaks, highlights or other techniques.

RATIO	ACTIVATOR	RESULT	PROCESSING TIME
 <b>1:2</b> 	5 vol (1,5%)	Enhances colour on lengths and ends	 at sight
	10 vol (3%)		

## 4. PRE-PIGMENTATION - REPIGMENTATION

These are two hi-tech services with guaranteed safe results, thanks to Grace. Pre-pigmentation prepares the hair for optimal absorption of pigment, ensuring that the final color results are uniform throughout. Repigmentation allows the coloring of hair that has been weakened or damaged by previous treatments of bleaching, high-lift lightening, perms or straightening.

SERVICE	RATIO	ACTIVATOR	PROCESSING TIME
Pre-Pigmentation	 <b>1:1,5</b> 	10 vol (3%)	 20 min
Repigmentation			 15/20 min

## 3. HIGH-LIFT LIGHTENERS

Extreme lightening can be achieved with the new Grace High-lift Lighteners, available in three shades. Each of these can be used in conjunction with 30 or 40 vol Activator, according to the desired effect.

\* It is advisable to use the formula on a base color which is not darker than light chestnut brown (5.0). Grace should always be applied to dry, unwashed hair.

RATIO	ACTIVATOR	RESULT	PROCESSING TIME
 <b>1:2</b> 	30 vol (9%)	Lifts 5 shades * from 6/7 level	 60 min
	40 vol (12%)	Lifts 5 shades * from 5/6 level	

# CLASSIFICATION

To achieve a client's desired look, hairdressers must understand perfectly the **numeric classification** of hair color level and the alpha-numeric coding of the reflections. This is a fundamental and important skill, that **Nika Hair Beauty Excellence** outlines in this **technical guide**.

HAIRCOLOR LEVEL	ALPHANUMERIC CODING SYSTEM OF THE GRACE RANGE	
1. black	.0 naturale	<b>N</b> natural <b>NN</b> natural natural
2. very dark brown	.1 cenere	<b>A</b> ash
3. dark brown	.2 viola	<b>V</b> violet <b>VV</b> violet violet
4. medium brown	.3 dorato	<b>G</b> gold
5. light brown	.4 ramato	<b>C</b> copper <b>CC</b> copper copper
6. dark blonde	.5 mogano	<b>M</b> mahogany
7. medium blonde	.6 rosso	<b>R</b> red <b>RR</b> red red
8. light blonde	.7 marroni	<b>B</b> brown
9. very light blonde	.8 beige	<b>BG</b> beige
10. platinum blonde	.9 perla	<b>P</b> pearl

## INTERPRETING THE NIKA GRACE CODING SYSTEM

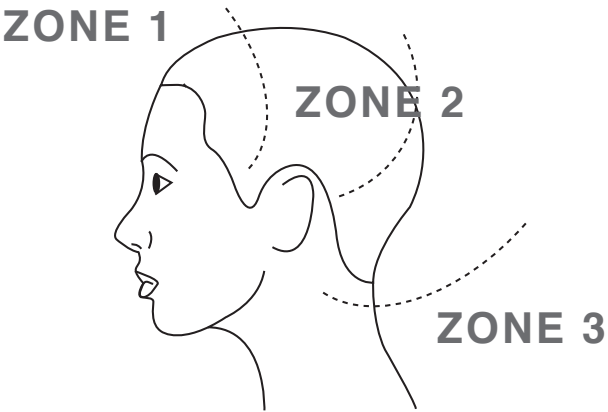
### ES. 6.46

**6** indicates the color level (Dark Natural Blonde)  
**4** indicates the primary reflect (Copper)  
**5** indicates the secondary (Red)

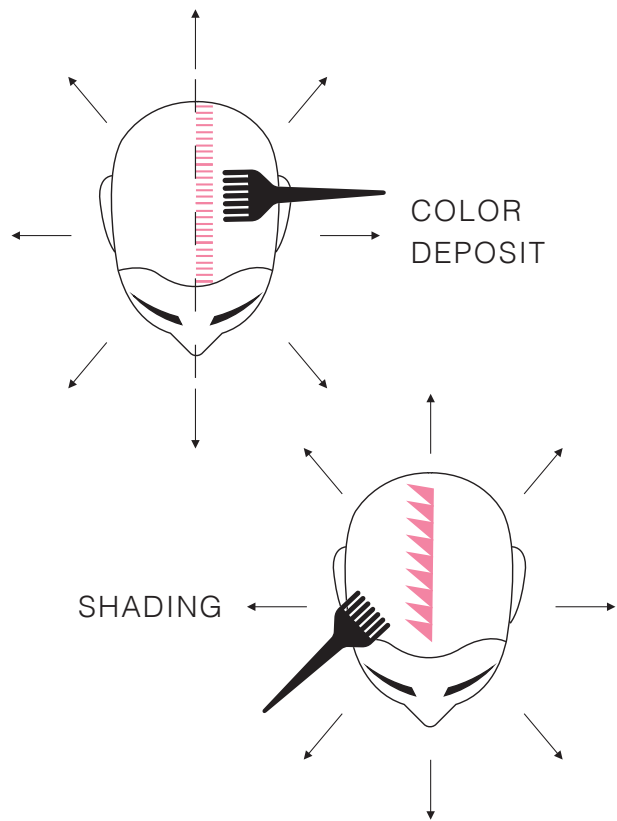
### ES. 6CR

**6** indicates the color level (Dark Natural Blonde)  
**C** indicates the primary reflect (Copper)  
**R** indicates the secondary reflect (Red)

# APPLICATION



- ZONE 1** The first half-centimetre of the hair, starting at the scalp (roots/regrowth).
- ZONE 2** the middle section of the hair length, starting where zone 1 finishes.
- ZONE 3** The ends of the hair, which are more porous and reach down to shoulders (not all hairstyles will have a ZONE 3).



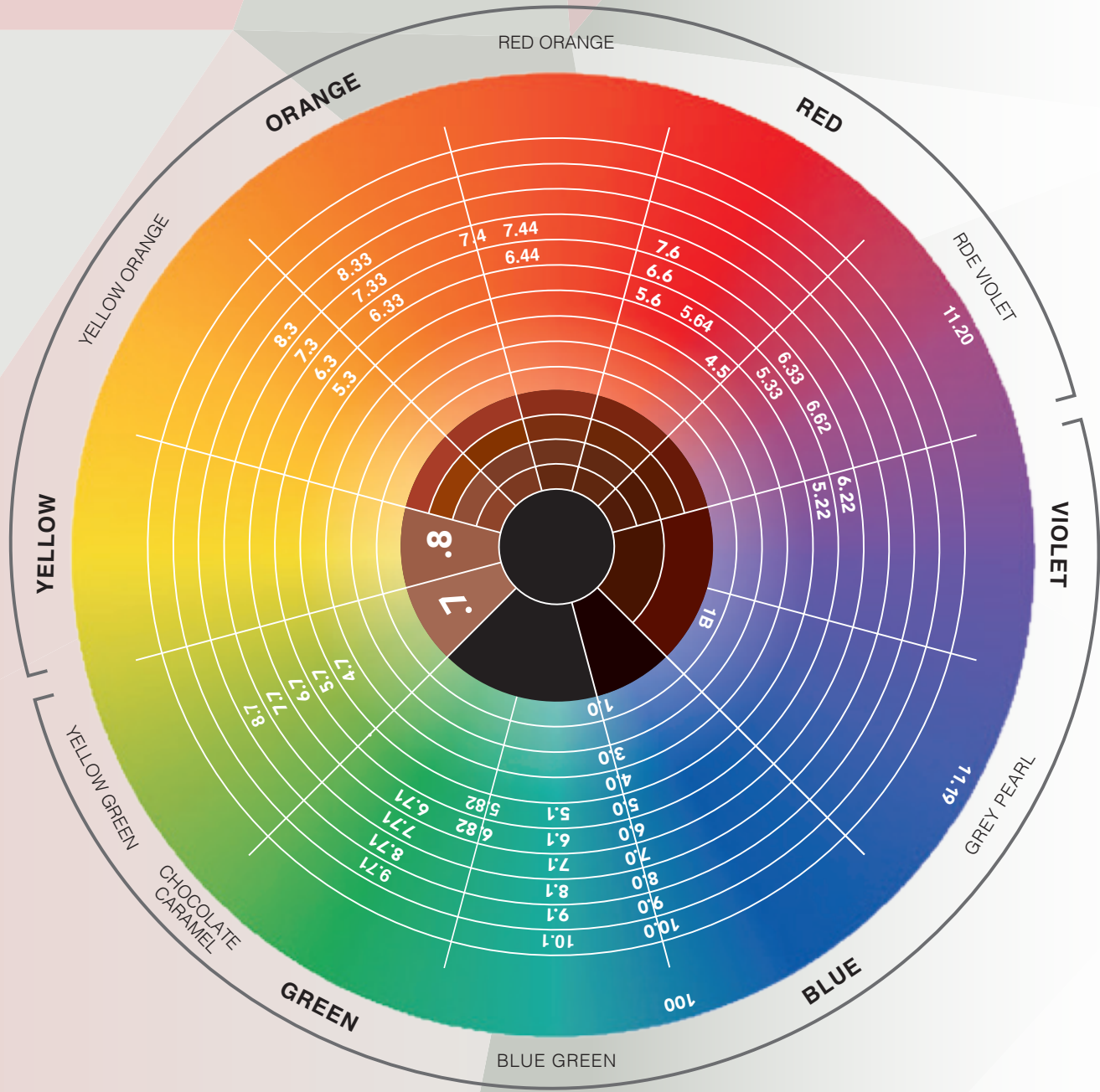
# SET UP GRACE



- 1. APPLICATION BRUSH - CLASSIC/BIG**  
This type of brush is particularly suitable for correct application of haircolor, thanks to its semi-rigid bristles which deposit color smoothly without becoming clogged by residue. Moreover, its size allows for ease and speed of color application to larger areas of hair.
- 2. APPLICATION BRUSH - CLASSIC/SMALL**  
This type of brush is particularly suitable for correct application of haircolor, thanks to its semi-rigid bristles which deposit color smoothly without becoming clogged by residue. Moreover, its size allows for precise color application to smaller, more focused, areas of hair.
- 3. METAL TAIL COMB**  
This highlighting comb allows easy and quick partings, and slicing of sections. The iron handle facilitates the insertion of foils.
- 4. COLOR MIXER**  
This plastic tool for mixing haircolor means that formulas are correctly mixed and prevents overuse and long-term damage of the brush.
- 5. MIXING BOWL**  
Rigorously in plastic. It is advisable to avoid containers in aluminum or other material as they are not suitable and are not permitted by the safety norms for containing chemical products.

Nika Technical Service: +39 388 73 29 704

GRACE  
with MPP Technology



SURPRISE WITH BRILLIANCE

**NIKA**  
HAIR BEAUTY EXCELLENCE

**GRACE**  
with MPP Technology

**SURPRISE WITH BRILLIANCE**

**NIKA**  
HAIR BEAUTY EXCELLENCE

**IBECOSMETICA SRL** Via Ponte a Piglieri, 8 / 56122 Pisa ITALY  
PH. +39 050 41426 / FAX +39 050 41426 / [info@nika.it](mailto:info@nika.it) / [WWW.NIKA.IT](http://WWW.NIKA.IT)



LIKE US / FOLLOW US / WATCH US / FIND US